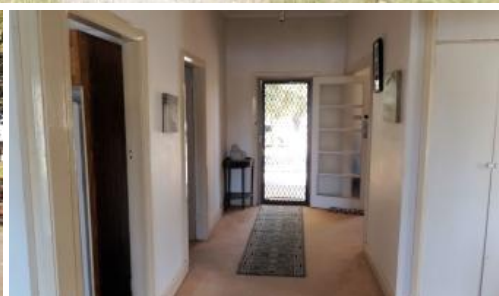


Sold

132 Pacific Hwy, Kempsey



Riverside Living

Located on the edge of town and with absolute river frontage, this three-bedroom home sits on a 2479 square meter block at the end of a beautiful, tree-lined driveway.

The rear deck offers you views over the river while inside you will find generous bedrooms, an open plan kitchen/dinning/family area and separate living room. Outside, there is a double carport plus garden shed, and the fertile soil is perfect for the keen gardener or veggie grower. This home is currently leased; however, this is also an ideal investment opportunity, providing a great return on your money. An ideal position for those who wish to enjoy all that river frontage can offer.

The above information provided has been furnished to us by the vendor/s. We have not verified whether or not that information is accurate and do not have any belief in one way or the other in its accuracy. We do not accept any responsibility to any person for its accuracy and do no more than pass it on. All interested parties should make and rely upon their own inquiries in order to determine whether or not this information is in fact accurate.

3 1 2 2,479 m²

Price	SOLD
Property Type	Residential
Property ID	1185
Land Area	2,479 m ²

Agent Details

Ian McGoldrick - 0412 710 612

Office Details

Kempsey Stock and Land
Shop1, 44 Forth Street Kempsey
NSW 2440 Australia
02 6562 6600

