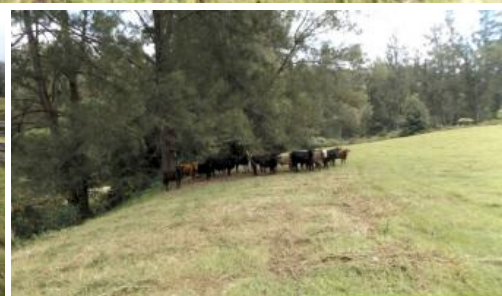


Sold



Burrapine



Well Located

Taylors Arm cattle property, with rich alluvial river flats and frontage to Taylors Arm Creek and double frontage to Appletree Creek. Located approximately 36km from Macksville. The property can run 80+ breeders and at present is running 126 head. The home is set high in the middle of the farm with great views and features 3 bedrooms plus a sleepout, open plan kitchen, dining, lounge area and wood fire. There is also a 3 bay farm shed with power and stockyards. Another feature of this property is that the property is subdivided into two lots with another building entitlement. The second block also has frontage to Taylors Arm Creek and Appletree Creek.

- Picturesque location - approximately 36km from Macksville
- Residence set on an elevated site overlooking the property
- Close to the village of Taylors Arm and The Pub with No Beer
- Productive cattle farm running capability of approximately 80+ breeders
- Subdivided into 2 lots both with water frontage

🏠 3 🚗 1 🐄 1 📏 946,964 m2

Price	SOLD
Property Type	Residential
Property ID	1015
Land Area	946,964 m2

Agent Details

Ian Argue - 0428 655 604

Office Details

Kempsey Stock and Land
Shop1, 44 Forth Street Kempsey
NSW 2440 Australia
02 6562 6600



Property Code: 682

The above information provided has been furnished to us by the vendor/s. We have not verified whether or not that information is accurate and do not have any belief in one way or the other in its accuracy. We do not accept any responsibility to any person for its accuracy and do no more than pass it on. All interested parties should make and rely upon their own inquiries in order to determine whether or not this information is in fact accurate.